



NP220 Polyclonal Antibody

Catalog No	YP-Ab-01912
Isotype	IgG
Reactivity	Human;Rat;Mouse;
Applications	WB;IHC;IF;ELISA
Gene Name	ZNF638
Protein Name	Zinc finger protein 638
Immunogen	The antiserum was produced against synthesized peptide derived from human ZNF638. AA range:1271-1320
Specificity	NP220 Polyclonal Antibody detects endogenous levels of NP220 protein.
Formulation	Liquid in PBS containing 50% glycerol, 0.5% BSA and 0.02% sodium azide.
Source	Polyclonal, Rabbit,IgG
Purification	The antibody was affinity-purified from rabbit antiserum by affinity-chromatography using epitope-specific immunogen.
Dilution	WB: 1/500 - 1/2000. IHC: 1/100 - 1/300. ELISA: 1/20000.. IF 1:50-200
Concentration	1 mg/ml
Purity	≥90%
Storage Stability	-20°C/1 year
Synonyms	ZNF638; NP220; ZFML; Zinc finger protein 638; Cutaneous T-cell lymphoma-associated antigen se33-1; CTCL-associated antigen se33-1; Nuclear protein 220; Zinc finger matrin-like protein
Observed Band	220kD
Cell Pathway	Nucleus speckle .
Tissue Specificity	Cervix,Epithelium,Skin,Testis,Uterus,
Function	alternative products:Additional isoforms seem to exist,disease:Isoform 5 is a tumor-associated antigen found in several cutaneous T-cell lymphoma (CTCL), and in particular in mycosis fungoides patients and in Sezary syndrome patients.,function:Binds to cytidine clusters in double-stranded DNA.,PTM:Phosphorylated upon DNA damage, probably by ATM or ATR.,sequence caution:Contaminating sequence. Potential poly-A sequence.,similarity:Contains 1 matrin-type zinc finger.,similarity:Contains 2 RRM (RNA recognition motif) domains.,subunit:Interacts with FHL2.,
Background	zinc finger protein 638(ZNF638) Homo sapiens The protein encoded by this gene is a nucleoplasmic protein. It binds cytidine-rich sequences in double-stranded DNA. This protein has three types of domains: MH1, MH2 (repeated three times) and MH3. It is associated with packaging, transferring, or



processing transcripts. Multiple alternatively spliced transcript variants have been found for this gene, but the biological validity of some variants has not been determined. [provided by RefSeq, Jul 2008],

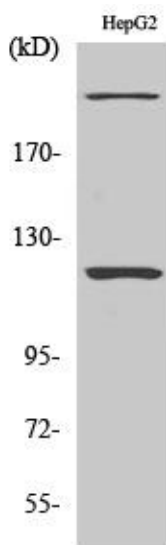
matters needing attention

Avoid repeated freezing and thawing!

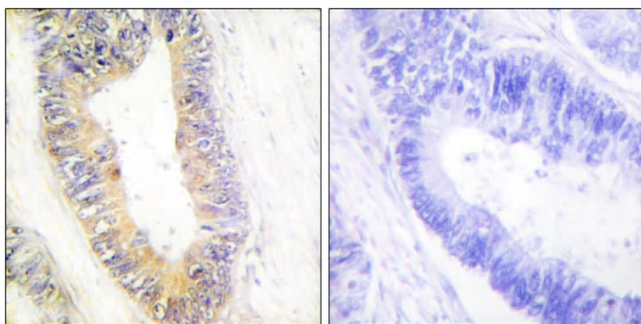
Usage suggestions

This product can be used in immunological reaction related experiments. For more information, please consult technical personnel.

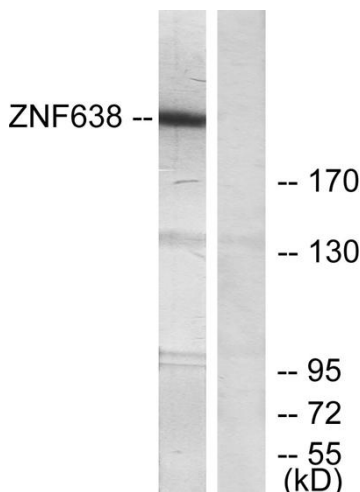
Products Images



Western Blot analysis of various cells using NP220 Polyclonal Antibody



Immunohistochemistry analysis of paraffin-embedded human colon carcinoma tissue, using ZNF638 Antibody. The picture on the right is blocked with the synthesized peptide.



Western blot analysis of lysates from HepG2 cells, treated with serum 20% 15', using ZNF638 Antibody. The lane on the right is blocked with the synthesized peptide.